

## Scan method for the complete capture of foot, lower leg and the digitization of foams

The new ISCAN 3DP + scans both feet and lower legs with a portable camera and is characterized by its extremely high accuracy. Even foams can be digitized with ISCAN 3DP + - quickly and easily. With a single click, the two data sets are combined to form a complete 3D model of the foot or leg.

The included software registered 12 individual three-dimensional images in a short time and creates a digital 3D model of both feet and legs up to the knee. The combination of low-sensor camera and integrated color camera enables the representation of the real surface on the 3D model. The entire scanning process takes less than 90 seconds.

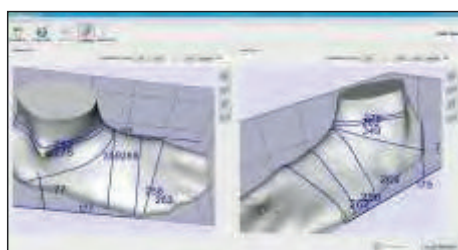


### Features

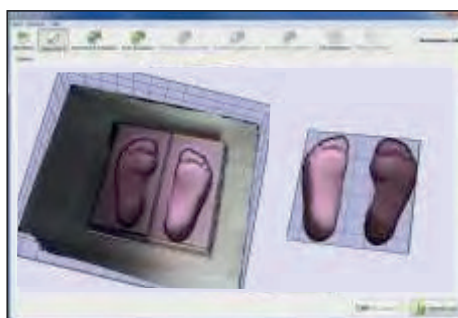
- Simultaneous scanning of both feet in less than 90 seconds
- 3D-data acquisition of the feet, storage and data output in STL, VRML2, X3D format compatible to all interfaces open CAD programs, usable for the production of shoe lasts and custom made shoes
- Additional color image overlay to display marks on foot, leg and foam
- Flexible Scan height, adjustable up to 350 mm
- Scanning of foams, automatic capturing of the foam and automatic merging of foot and foam data
- Automatic measuring function of the feet, with lengths and circumference measurements, data format will be exported in CSV or MS Excel files
- Integrated print option
- Integrated option to send data via FTP server or e-mail
- Intuitive user interface for easy software usage



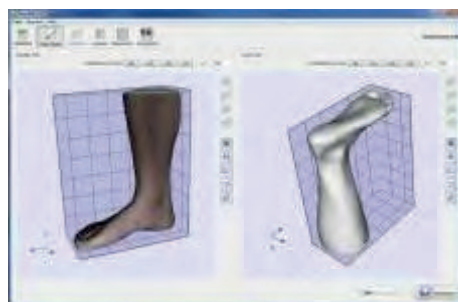
Scan of 12 measurement positions



Automatic measurement function



Scanning and automatic cutting of the foams



Automatic merging of foot- and foam data

Scan method for the complete capture of foot, lower leg and the digitization of foams

## Applications

- Simple "measurement taking" for the production of custom made (orthopedic) shoes
- Using the digital scanning process the time-and labor-consuming preparation of the casting and the moulding becomes superfluous
- Use of the STL data set for the treatment of patients with individual insoles
- Suitable for "shoe fitting"

## Scope of supply

- 1x mobile Kinect (camera) including tripod
- 1x measuring mat

## Optional

- 1x Hard shell carrying case